

THE MADISON



Elevation B

Shown with optional raised brick veneer, opt. metal roof on dormers & porch, opt. transoms, & opt. double front exterior doors



Elevation A



Elevation C

Shown with opt. raised stone veneer & opt. metal roof on porch



Elevation D

Shown with opt. metal roof on porch

Updated 11.30.20



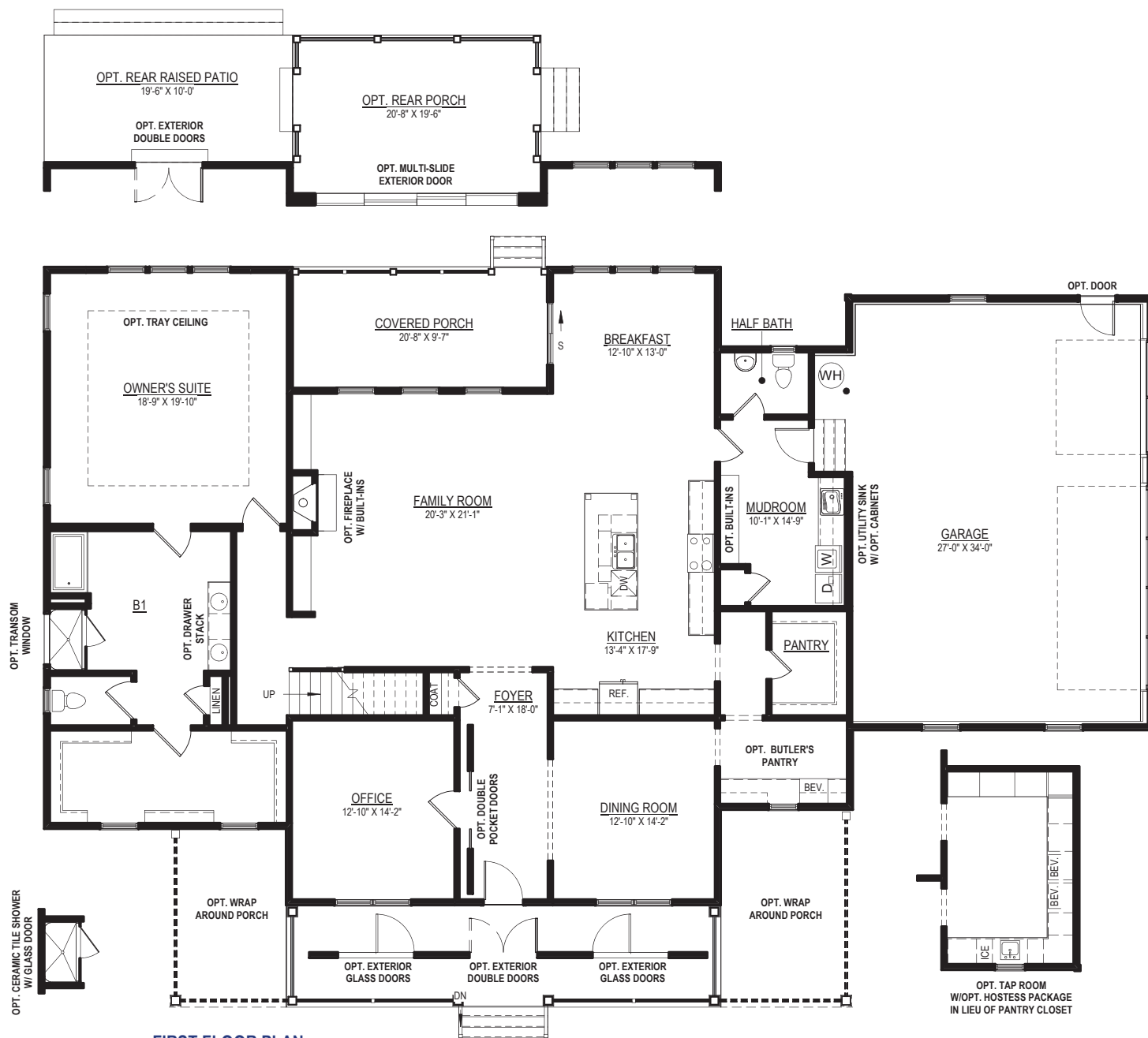
9245 Shady Grove Rd., Suite 200
Mechanicsville, VA 23116
www.rcibuildersnewhomes.com

Elevations shown are artist's rendering. All plans, details, and square footages are approximate and subject to change. Illustrations may not represent finished construction details. All optional items indicated are available at additional cost. Not all features available are shown. Please ask our Sales Representative for complete information.



THE MADISON

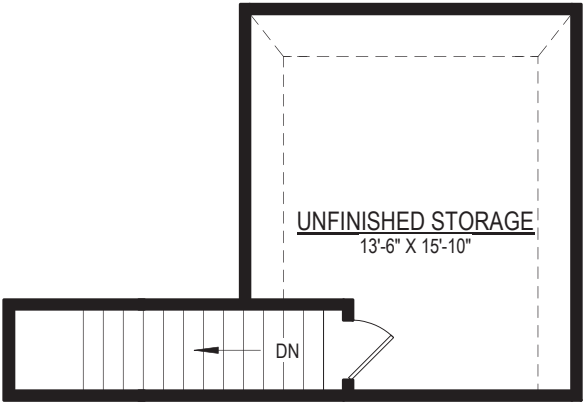
4 BEDROOMS, 3 FULL BATHS, HALF BATH, 3-CAR GARAGE,
MUDROOM, UNFINISHED THIRD FLOOR STORAGE
& OPT. WRAP AROUND PORCH



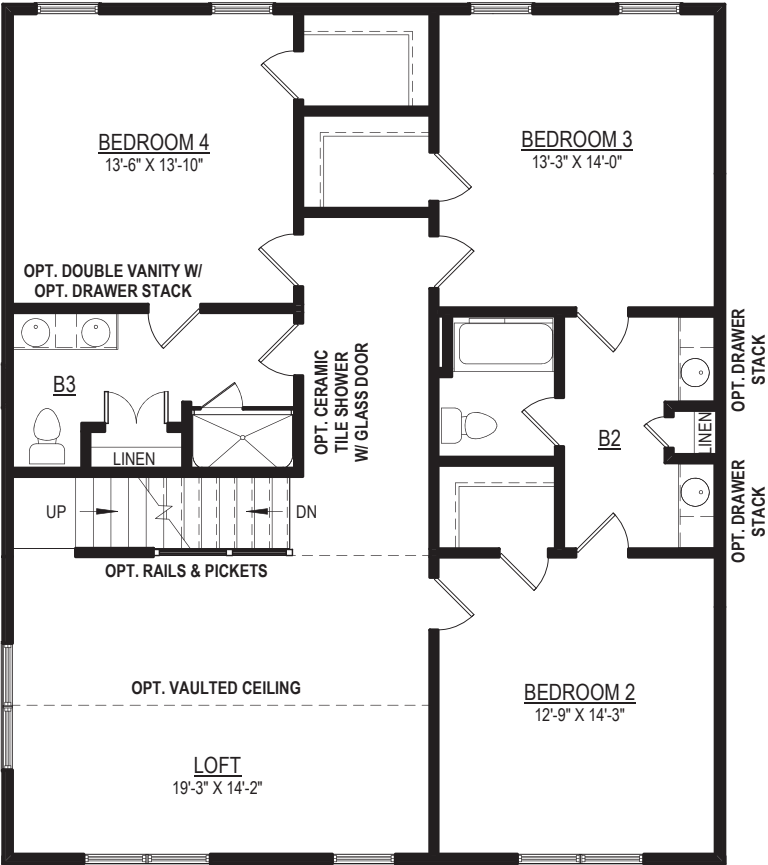
FIRST FLOOR PLAN

Elevations shown are artist's rendering. All plans, details, and square footages are approximate and subject to change. Illustrations may not represent finished construction details. All optional items indicated are available at additional cost. Not all features available are shown. Please ask our Sales Representative for complete information.

Floor Plan

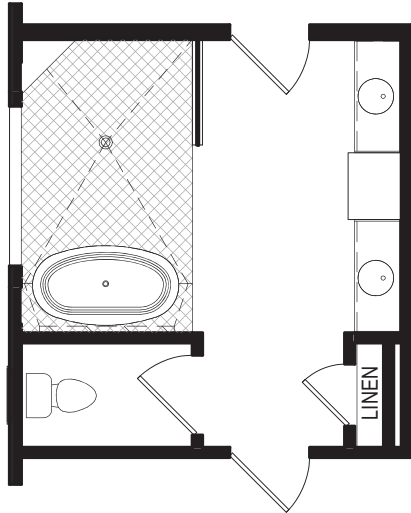


THIRD FLOOR PLAN

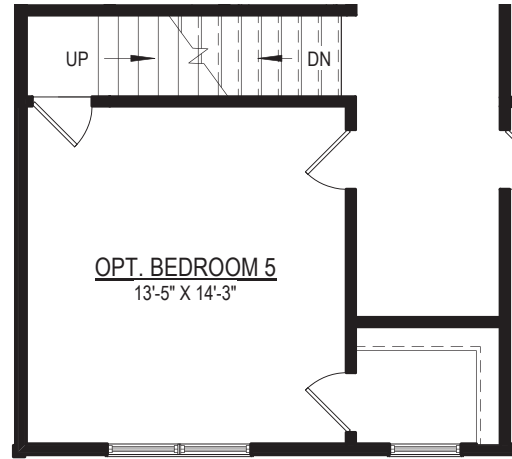


SECOND FLOOR PLAN

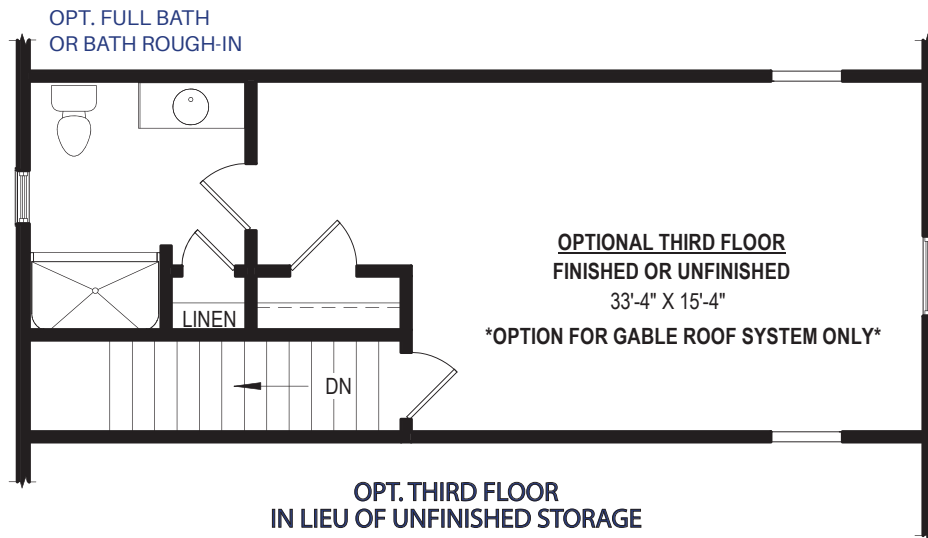
Options



OPT. LUXURY BATH W/OVERSIZED CERAMIC TILE "WET ROOM" & FREESTANDING TUB



**OPT. BEDROOM #5
IN LIEU OF LOFT**



**OPT. THIRD FLOOR
IN LIEU OF UNFINISHED STORAGE**